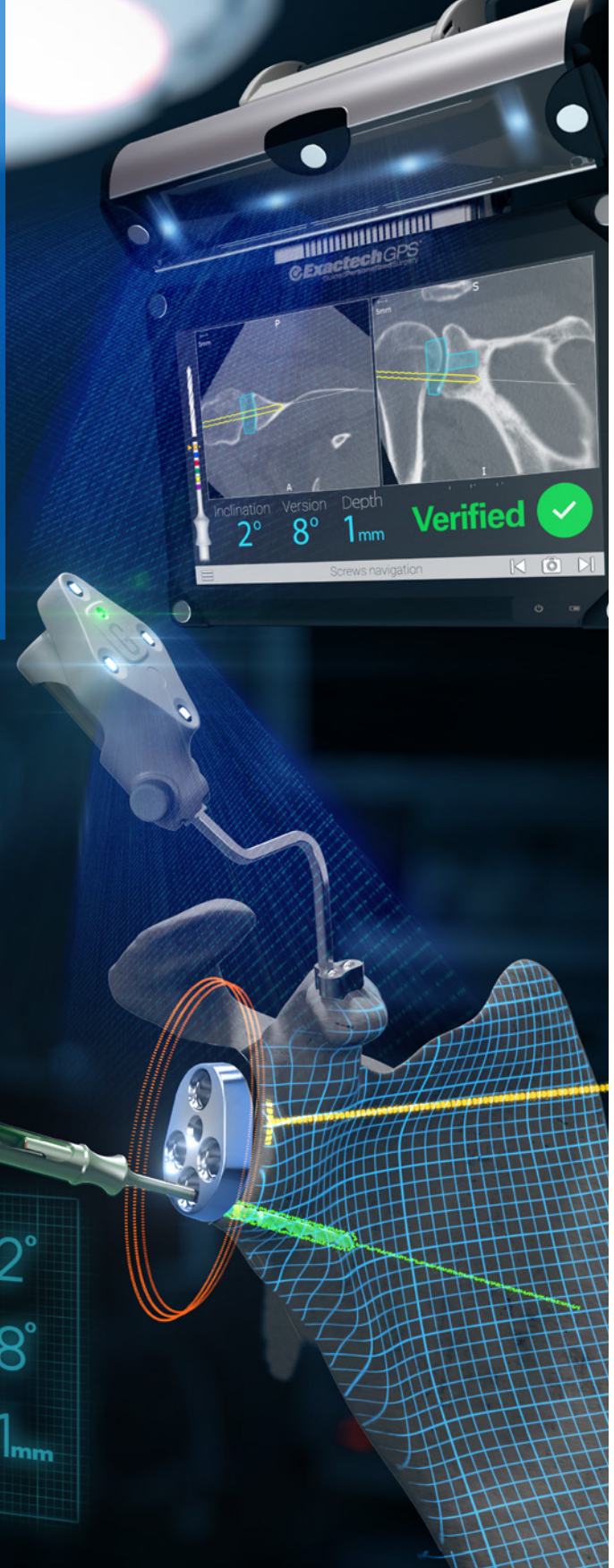


From Planning to Placement: Verified.

ExactechGPS®



Shoulder Application

2°
8°
1mm

Exactech®



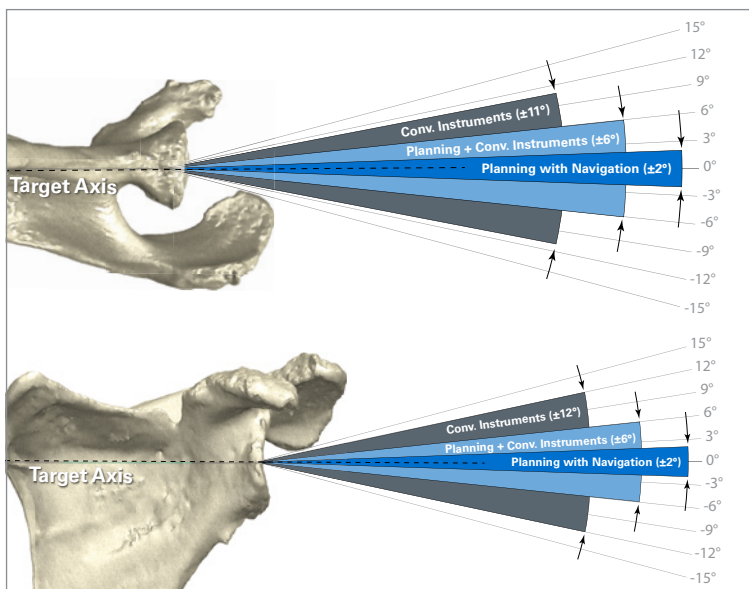
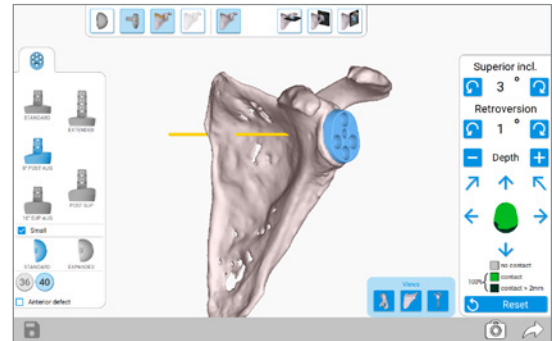
ExactechGPS®

Equinoxe® Planning App + ExactechGPS® shoulder navigation gives surgeons control before and during surgery. It's the first and only shoulder technology that connects the preoperative plan with real-time guidance in the O.R. – and verifies implant placement.^{1,2}

Preoperative Planning + Real-Time Navigation = A Better Executed Case

Surgery

- **Intraoperative flexibility**
 - Ability to adjust surgical plan in the O.R.
- **Real-time glenoid vault visibility**
 - Retroversion | Inclination | Reaming | Drilling depth | Screw placement | Final implant placement
- **Time neutral after initial cases^{5,6}**
- Fast turnaround time from CT scan to intraoperative active navigation
- Compatible with Equinoxe glenoid solutions, including small reverse baseplates and augments



Version (top) and inclination using conventional instruments,⁷ planning + conventional instruments, and planning + navigation.¹

References

1. **Greene A., et al.** Navigated vs. non-navigated results of a CT based computer assisted shoulder arthroplasty system in 30 cadavers. Presented at ISTA 2018.*
2. **Nashikkar P., et al.** Role of intraoperative navigation in the fixation of the glenoid component in reverse total shoulder arthroplasty: a clinical case-control study. *J Shoulder Elbow Surg.* 2019 Sept.;28(9):1685-1691.
3. **Nashikkar P., et al.** Computer navigation re-creates planned glenoid placement and reduces correction variability in total shoulder arthroplasty: an in vivo case-control study. *J Shoulder Elbow Surg.* 2019 July 25. Article in press.
4. **Roche C., et al.** Impact of screw length and screw quantity on rTSA glenoid fixation for two different sizes of glenoid baseplates. JSES Open Access (JESOA-D-19-00048R1).*
5. **Greene A., et al.** Clinical Use of a Computer Assisted Anatomic Total Shoulder Arthroplasty System: An Analysis of 574 Cases. Presented at CAOS 2019.
6. **Greene A., et al.** Clinical Use of a Computer Assisted Reverse Total Shoulder Arthroplasty System: An Analysis of 1702 Cases. Presented at CAOS 2019.
7. **Iannotti, J. et al.** Three-dimensional preoperative planning software and a novel information transfer technology improve glenoid component positioning. *J Bone Joint Surg.* 2014;96:e71(1-8).

*In vitro (bench) test results may not necessarily be indicative of clinical performance.

Available for use exclusively with the Equinoxe® Platform Shoulder System, including its comprehensive glenoid solutions.

Not all devices shown are available in every market. Cover image is a representational graphic for illustration purposes and not an actual picture of ExactechGPS. ExactechGPS® and Equinoxe® Planning App are manufactured by Blue Ortho and distributed by Exactech, Inc.

Exactech, Inc. is proud to have offices and distributors around the globe.

For more information about Exactech products available in your country, please visit www.exac.com.

Space

- Compact and mobile package
- Touchscreen tablet integrates seamlessly into the sterile field for easy access

Outcomes

- **Improved accuracy – verified** implant placement^{1,2}
 - Allows true execution of preoperative plan and visual recording of implant placement, providing useful surgical reports for surgeons
- **Better fixation^{3,4}**
- Continued published and peer-reviewed data showing the clinical benefits

Cost

- No capital expense and hassle-free hospital approval process