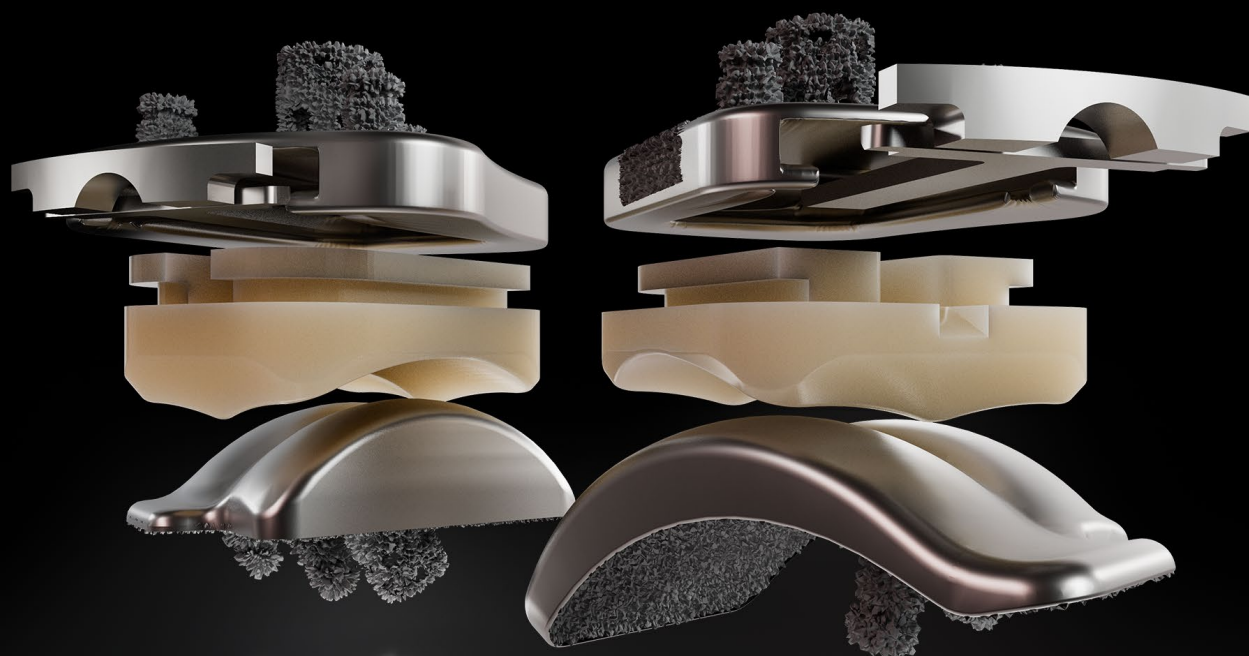


VANTAGE[®]

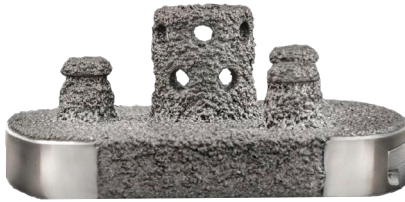
TOTAL ANKLE

with Advanced Activit-E™ Polyethylene



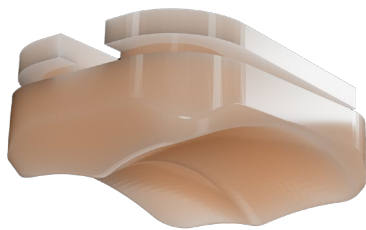
exactech

The Vantage Total Ankle System is a solutions-oriented system designed with you in mind. Our thoughtful implant designs and patient-specific instrumentation are designed to address clinical challenges and patient outcomes.



◀ TIBIA

- Proprietary CT reconstruction studies evaluated healthy and diseased tibias to create anatomic design¹
- Designed to not violate the anterior cortex and account for fibular articulation^{1,2}
- Initial fixation is created through the press-fit bone cage and plasma pegs.



◀ LOCKING CLIP

- Facilitates easy insertion and removal of the polyethylene liner if necessary

◀ ACTIVIT-E™ VITAMIN E POLYETHYLENE

- Unique manufacturing process replaces gamma irradiation crosslinking with peroxide crosslinking and adds vitamin E to provide strength, flexibility, toughness, and oxidative stability.

Our proprietary CT reconstruction studies guided our talus implant designs.¹



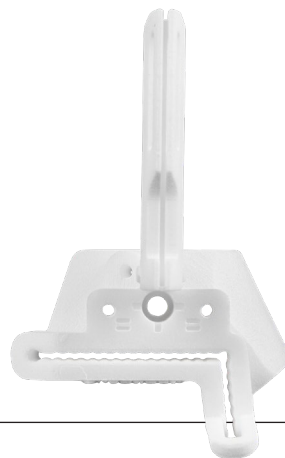
▲ CURVED TALUS ▲

- Curve-on-curve shape aligns with the trabecular bone structure for inherent stability²



▲ FLAT CUT TALUS

- Initial fixation through the press-fit bone cage and plasma pegs



◀ VANTAGE ANKLE PSI

- Pre-plan resections, verify implant sizes and view deformities.

REFERENCES

1. Data on File at Exactech, Inc.
2. Valderrabano, V., Horisberger, M., Russell, I. et al. Etiology of ankle osteoarthritis. Clin Orthop Relat Res. 2009; 467: 1800. doi:10.1007/s11999-008-0543-6.

The Vantage Ankle is indicated for cemented use only.

Exactech, Inc. is proud to have offices and distributors around the globe. For more information about Exactech products available in your country, please visit www.exac.com. The Vantage Ankle PSI is manufactured by 3D Systems, Inc., and distributed in the U.S. by Exactech.