



Guided Bone Regeneration Using Regenaform™ for Implant Site Development

Series A, Number 3

JAMES D. RUSKIN, DMD, MD, FACS
Center for Implant Dentistry, University of Florida, Gainesville, FL USA

Presentation

A 33-year-old patient presented with previous history of trauma to the anterior maxilla, resulting in the loss of tooth #9 at age 18. The site had inadequate width to support implant restoration of the area.



Occlusal view of ridge defect—pregraft



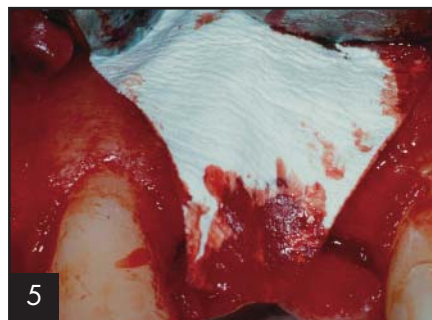
Ridge defect exposed for graft placement—ridge prepared for graft with sharp curette to remove soft tissue remnants prior to screw placement.



Fixation screw placed with head of screw at planned final contour of ridge. Subperiosteal releasing incision performed to allow for tension free closure of flap after graft placed



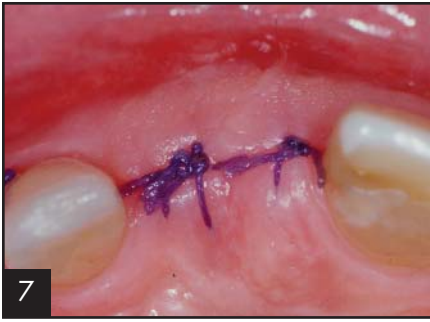
Regenaform 1.0cc placed around fixation screw



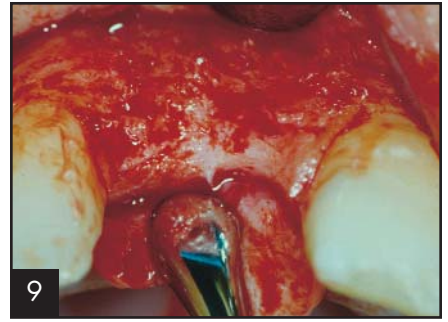
Resorbable membrane placed over graft material after excess graft material removed



Tension free flap closure with a 4-0 resorbable suture.



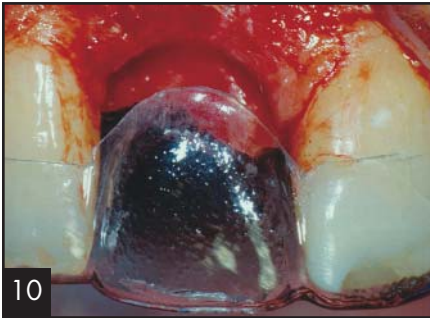
Graft site one week post-op



Ridge exposed for implant placement



Ridge six months after graft placement



Site prepared for placement of implant



Facial view of implant six weeks post-placement



Implant in place with healing cap



Occlusal view of implant six weeks post-placement



Abutment placed six weeks post-implant placement



Permanent crown on day of delivery



Crown two years post-delivery

Exactech®

2320 NW 66th Court
Gainesville, Florida 32653
1-866-284-9690

www.exac.com

©2004 Exactech, Inc.
717-00-62 0305