



# Posterior Ridge Augmentation Utilizing Regenaform® Moldable Allograft Paste

Series B, Number 5

D. RYAN CLAGETT, DMD, MS  
Elizabethtown, KY

## Introduction

Implant therapy has become the standard of care for edentulous areas of the oral cavity. Following tooth extraction, often there is an inadequate amount of bone to place dental implants. In cases where there is insufficient bone to place implants, a ridge augmentation procedure is performed prior to implant placement. Ridge augmentation techniques to correct these defects include guided bone regeneration (GBR) utilizing a barrier membrane, bone graft alone or bone graft with a membrane.

## Presentations

A 73-year-old female presented with a long-standing edentulous ridge in the left posterior mandible and desired treatment with an endosseous dental implant to provide a balanced dentition. The ridge had inadequate horizontal dimension to accommodate the requested restoration. You will notice in Figure 2, that sufficient bone is present for implant placement. However, it is lingualized from the optimal restoratively driven implant placement site. GBR therapy utilizing Regenaform® allograft paste and an acellular dermal matrix barrier membrane was completed and allowed four months for healing prior to implant placement.



Figure 1: Pre-op occlusal view #19



Figure 1a: Pre-op buccal view #19

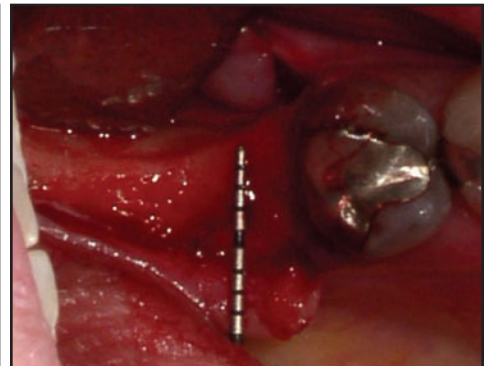


Figure 2: Exposed ridge – occlusal



Figure 2a: Exposed ridge – buccal



Figure 3: Cortical perforations and tenting screws in place

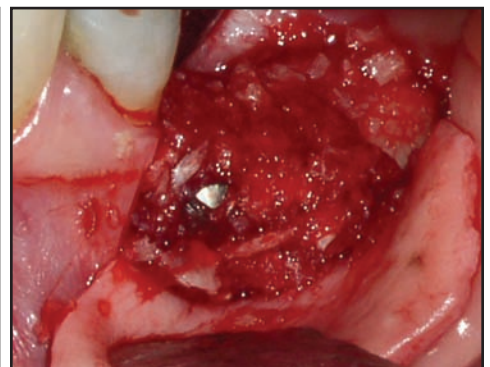


Figure 4: Regenaform graft in place

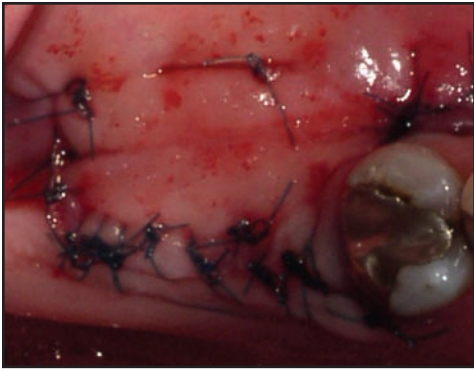


Figure 5: Monofilament suture in place



Figure 6: One week post-op healing



Figure 7: Four months post-op healing – occlusal

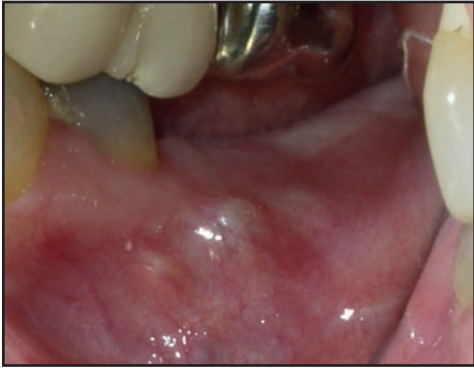


Figure 7a: Four months post-op healing – buccal

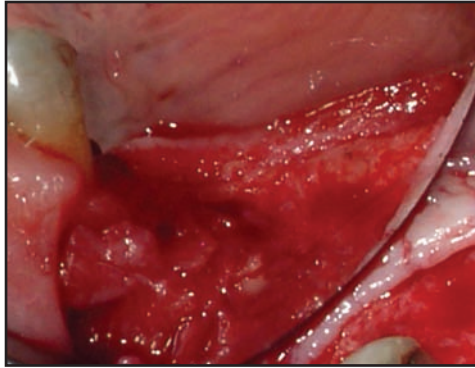


Figure 8: Four-month re-entry #19

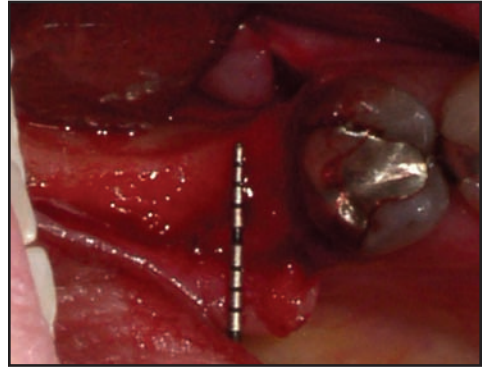


Figure 9: Pre-op ridge #19

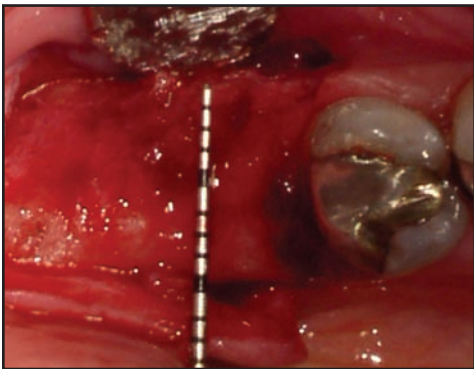


Figure 9a: Post-op grafted ridge #19

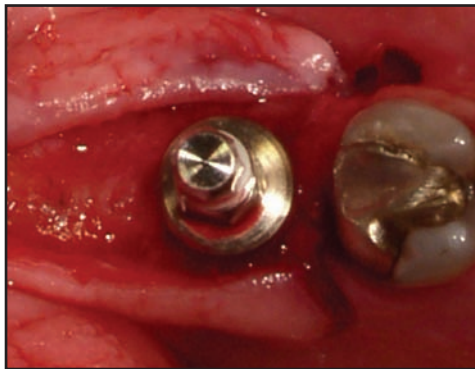


Figure 10: Straumann Implant placement (4.8WN x 10) – occlusal

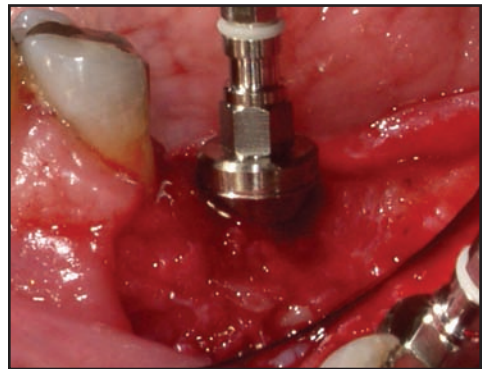


Figure 10a: Straumann Implant placement (4.8WN x 10) – buccal

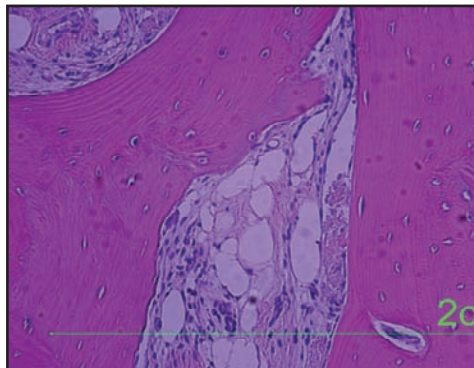


Figure 11: Regenaform histology – H & E Stain

**Exactech®**

2320 NW 66th Court  
Gainesville, Florida 32653  
1-866-284-9690 www.exac.com

Regenaform® is processed by Regeneration Technologies and distributed by Exactech.

©2007 Exactech, Inc.  
717-00-70 0707